

# National Housing Construction Index

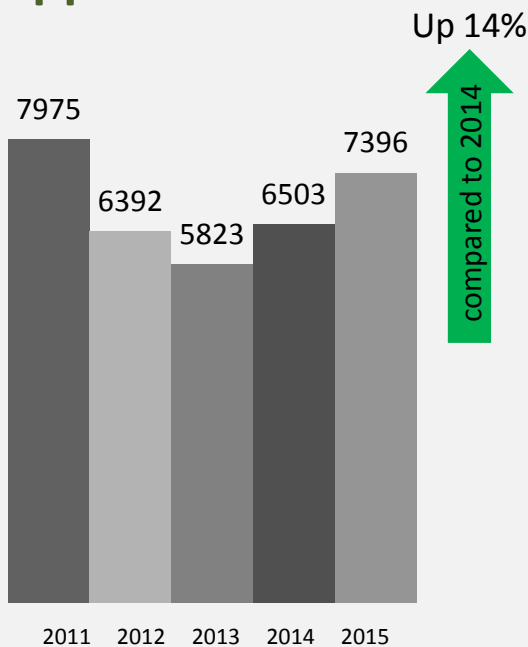


Volume 21 January – June 2015

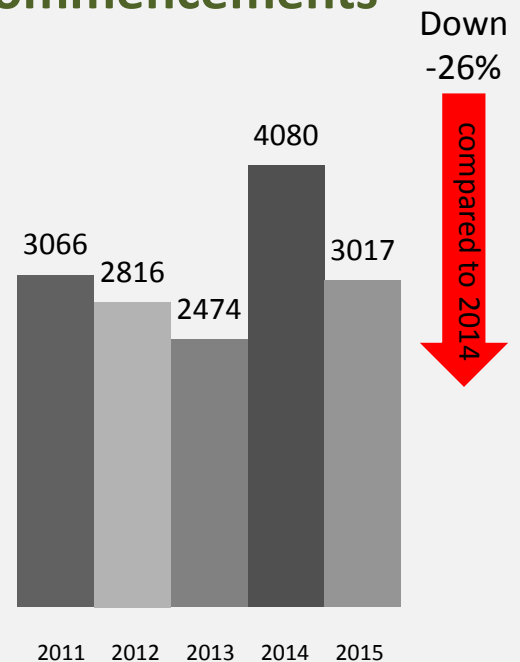
The **National Housing Construction Index** has been compiled from data gathered and posted on the [www.link2plans.com](http://www.link2plans.com) website. Link2Plans analyse and classify all planning applications and commencement notices as provided by local authorities. The National Housing Construction Index will be produced by the team of researchers in [www.link2plans.com](http://www.link2plans.com) on a bi-monthly basis.

The **National Housing Construction Index** by Link2Plans indicates current and future housing construction activity on national, regional and local level. Two key sets of data are used. The first, planning applications are a measure of sentiment and a measure of potential future activity. The second, commencement notices are a real time barometer of actual housing construction activity.

## Applications



## Commencements



**Key Findings: Applications are up +14% nationally when compared to the same period in 2014 with 25 counties showing an increase over last year. Applications in Dublin are slightly down by -5%.**



**Commencements: Commencements are down -26% when compared to 2014. This is a reflection of the surge of commencements lodged in the first quarter of 2014. Commencements are up +22% when compared to the same period in 2013.**

# National Housing Construction Index



Volume 21 January – June 2015

## Applications by county

	Jan-Jun	Jan-Jun	Jan-Jun	Jan-Jun	Jan-Jun	2014 vs 2015		
	2011	2012	2013	2014	2015	Change	%	
Dublin	1412	1244	1357	2110	1996	-114	-5%	
Monaghan	126	115	107	105	108	3	3%	
Limerick	346	269	208	210	217	7	3%	
Tipperary	289	226	198	190	197	7	4%	
Carlow	107	90	96	80	84	4	5%	
Clare	271	183	139	173	188	15	9%	
Mayo	248	186	157	152	167	15	10%	
Sligo	143	131	103	94	104	10	11%	
Kildare	309	192	229	244	275	31	13%	
Cavan	115	83	71	74	86	12	16%	
Waterford	180	136	117	130	156	26	20%	
Galway	523	377	314	313	377	64	20%	
Roscommon	113	92	83	86	106	20	23%	
Kerry	314	196	167	183	227	44	24%	
Cork	1193	1012	937	824	1024	200	24%	
Wexford	303	240	206	227	290	63	28%	
Meath	342	263	205	268	349	81	30%	
Kilkenny	177	133	134	124	163	39	31%	
Wicklow	252	224	207	251	332	81	32%	
Longford	49	47	50	37	49	12	32%	
Donegal	544	443	337	267	360	93	35%	
Louth	219	171	160	142	203	61	43%	
Offaly	113	88	60	60	86	26	43%	
Westmeath	125	96	78	77	114	37	48%	
Laois	105	100	70	59	98	39	66%	
Leitrim	57	55	38	23	40	17	74%	
<b>Grand Total</b>	<b>7975</b>	<b>6392</b>	<b>5828</b>	<b>6503</b>	<b>7396</b>	<b>893</b>	<b>14%</b>	

# National Housing Construction Index



Volume 21 January – June 2015

## Commencements by county

	Jan-Jun	Jan-Jun	Jan-Jun	Jan-Jun	Jan-Jun	2014 vs 2015	
	2011	2012	2013	2014	2015	Change	%
Donegal	162	128	126	259	118	-141	-54%
Monaghan	52	31	33	81	39	-42	-52%
Roscommon	48	34	49	56	27	-29	-52%
Sligo	63	62	42	91	44	-47	-52%
Clare	135	113	110	166	81	-85	-51%
Mayo	81	86	88	167	86	-81	-49%
Tipperary	141	103	80	163	87	-76	-47%
Longford	17	18	19	23	13	-10	-43%
Laois	65	47	37	62	37	-25	-40%
Westmeath	20	49	19	56	35	-21	-38%
Limerick	149	161	81	141	93	-48	-34%
Cork	272	303	240	529	369	-160	-30%
Wexford	119	90	106	141	100	-41	-29%
Offaly	51	48	38	62	44	-18	-29%
Louth	91	83	78	101	73	-28	-28%
Galway	247	202	150	260	195	-65	-25%
Meath	134	110	100	194	153	-41	-21%
Kerry	158	125	89	119	94	-25	-21%
Leitrim	35	29	22	27	22	-5	-19%
Carlow	33	37	27	46	38	-8	-17%
Kildare	110	96	86	133	110	-23	-17%
Cavan	62	67	47	56	50	-6	-11%
Waterford	77	71	44	78	70	-8	-10%
Kilkenny	85	91	65	85	79	-6	-7%
Dublin	586	554	589	854	829	-25	-3%
Wicklow	73	78	109	130	131	1	1%
<b>Grand Total</b>	<b>3066</b>	<b>2816</b>	<b>2474</b>	<b>4080</b>	<b>3017</b>	<b>-1063</b>	<b>-26%</b>

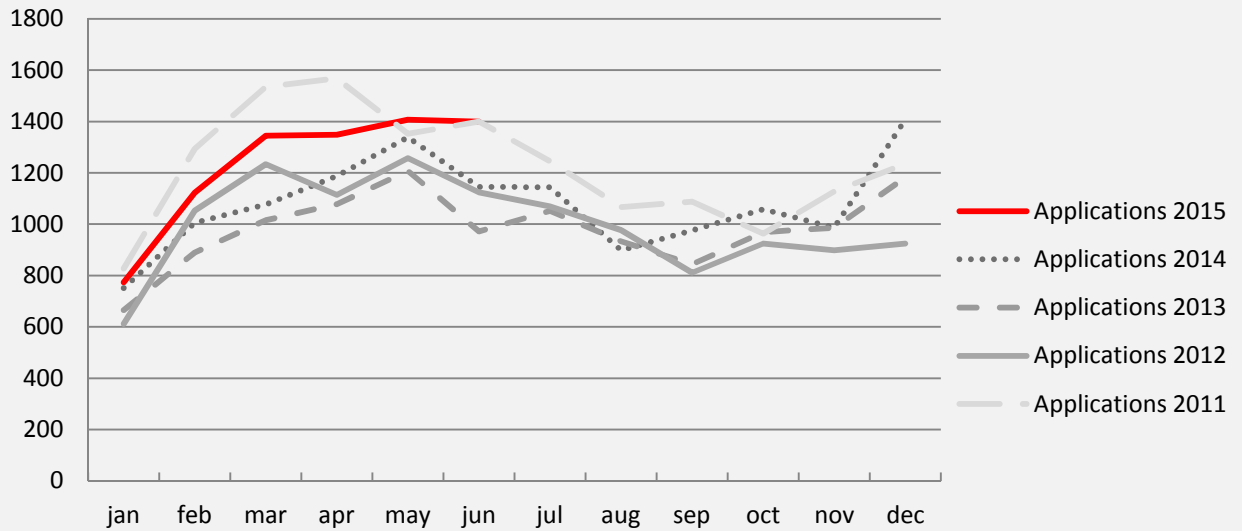


# National Housing Construction Index

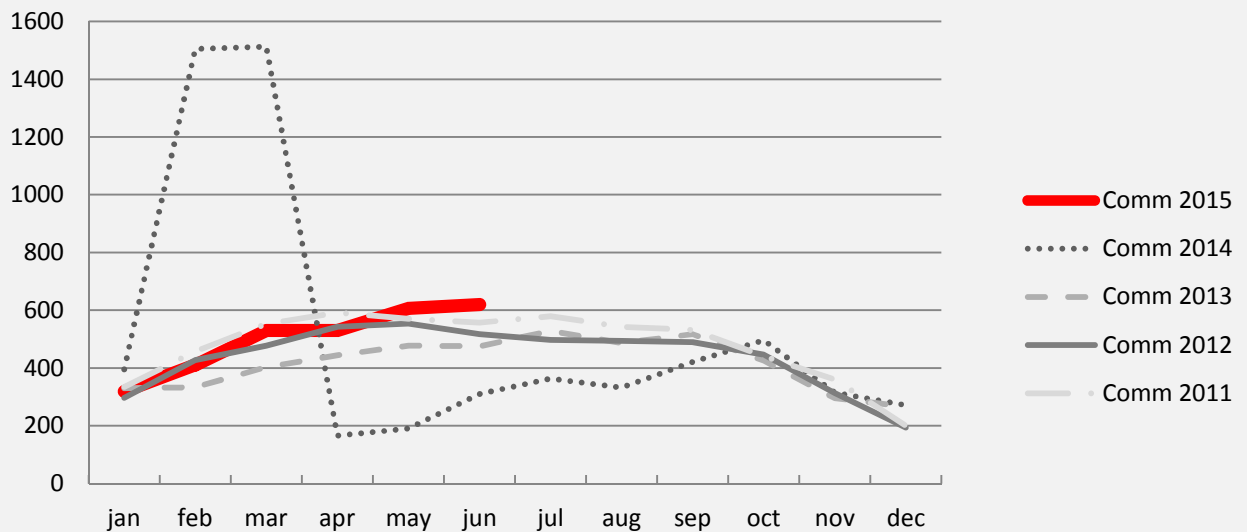


Volume 21 January – June 2015

## Applications



## Commencements



# National Housing Construction Index



Volume 21 January – June 2015

## Methodology:

The sources of data for the Index are planning applications and commencement notices as provided by local authorities under the planning and development act 2000 and the building control (amended) regulations, 2013. It should be noted that under Planning and Development act 2000 some categories of building are exempted from planning permission for example, some extensions under 40sq mts, are not included in the index. Non "construction activity" related applications such as fire certificates, retentions, extension of duration etc..... have been excluded from the index. This index focuses on "housing based" construction activity only i.e. house construction, house extensions and residential developments.

## Disclaimer – Link2Plans

The **National Housing Construction Index** is prepared from information that is provided by local authorities under planning and building control regulations. We believe that the index is collated with care from data available at the time of publishing, but we do not make any statement as to its accuracy or completeness. We reserve the right to vary our methodology and to edit or discontinue the indices, or analysis at any time. Persons seeking to place reliance on any information contained in this index for their own or third party commercial purposes do so at their own risk.



**ABOUT THE AUTHOR:** Danny O'Shea is Managing Director & Co-Founder of Link2Plans. Established in 2010 Link2Plans is the portal for every current planning application, approval and commencement in the country. Previously Danny was Managing Director at Riverside Manufacturing (Ireland). Danny holds a Diploma in Computing (1986) and an MBA from DKIT (2006) and has been involved in systems development, management, innovation and online development for the past 25 years.